

# MATERIAL HANDLING

108 Platform Trucks

111 Hand Trucks

108-109 Tilt Trucks

111 Step Stools

109 Tilt-N-Wheel™

111 Dunnage Racks

109-110 Utility Carts

112 Shelves

110 Service / Bussing  
Carts



## Platform Trucks

### PLATFORM TRUCKS

Structural plastic construction and rounded corners protect against accidental wall and door damage. No bumpers required. Plastic construction will not rust, dent, crack, chip, peel or splinter unlike conventional metal or wood. All platform trucks come in charcoal grey and feature a heavy-duty, reinforced steel handle.



Brand	Item Number	Item	Capacity	Caster Size	Deck Size	Pack Case	Case Weight	Case Cube
CMC	5860	Utility	700 lbs.	5"	24" x 48"	1	68.06 lbs.	6.420
CMC	5865	Standard	1,200 lbs.	6"	24" x 48"	1	75.50 lbs.	7.170
CMC	5870	Heavy-Duty	2,200 lbs.	8"	24" x 48"	1	78.88 lbs.	8.500
CMC	5875	Utility	700 lbs.	5"	30" x 60"	1	72.56 lbs.	10.030
CMC	5880	Standard	1,200 lbs.	6"	30" x 60"	1	80.00 lbs.	11.200
CMC	5885	Heavy-Duty	2,200 lbs.	8"	30" x 60"	1	83.38 lbs.	13.280

## Tilt Trucks

### 5/8 CUBIC YARD TILT TRUCKS

All models feature one-piece extra strong seamless industrial plastic construction. Inset wheel placement prevents wall/door damage and allows for nesting in shipment and in storage. Fits through standard office doorways. Optional domed, center-hinged lid helps to contain odors and keep pests out. Stainless steel piano hinge will not rust.

Available in a Recycle model, see page 107 for details.



5840 Shown w/ 5843 Lid

Brand	Item Number	Item	Capacity	Color	Pack Case	Case Weight	Case Cube
CMC	5839BK	Utility	300 lbs.	● Black	1	59.00 lbs.	43.110
CMC	5840BK	Standard	750 lbs.	● Black	1	79.00 lbs.	43.110
CMC	5845BK	Heavy-Duty	1,200 lbs.	● Black	1	81.00 lbs.	43.110

### TILT TRUCK COVER

CMC	5843BK	Fits all 5/8 cu. yd. tilt trucks		● Black	1	22.52 lbs.	8.640
-----	--------	----------------------------------	--	---------	---	------------	-------

### 1.1 CUBIC YARD TILT TRUCKS

All models are equipped with deluxe roller bearing wheels and heavy-duty casters. Wheels are inset to fit standard office doorways and to reduce wall and door damage. This Tilt Truck is easily handled by one person and can be easily cleaned with steam or high pressure hot water. Optional domed, center-hinged lid helps to contain odors and keep pests out. Stainless steel piano hinge will not rust.

Brand	Item Number	Item	Capacity	Color	Pack Case	Case Weight	Case Cube
CMC	<b>5833BK</b>	Standard	800 lbs.	● Black	1	98.00 lbs.	55.280
CMC	<b>5835BK</b>	Heavy-Duty	2,000 lbs.	● Black	1	151.00 lbs.	55.280

#### TILT TRUCK COVER

CMC	<b>5837BK</b>	Fits all 1.1 cu. yd. tilt trucks		● Black	1	22.52 lbs.	8.640
-----	---------------	----------------------------------	--	---------	---	------------	-------



5835 Shown w/ 5837 Lid

### 1.5 CUBIC YARD TILT TRUCKS

All models are equipped with deluxe roller bearing wheels and heavy-duty casters. This Tilt truck is easily handled by one person and is ideal for industrial/commercial applications. Optional domed, center-hinged lid helps to contain odors and keep pests out. Stainless steel piano hinge will not rust.

Brand	Item Number	Item	Capacity	Color	Pack Case	Case Weight	Case Cube
CMC	<b>5849BK</b>	Standard	1,200 lbs.	● Black	1	202.00 lbs.	102.380
CMC	<b>5852BK</b>	Heavy-Duty	2,100 lbs.	● Black	1	206.00 lbs.	102.380

#### TILT TRUCK COVER

CMC	<b>5853BK</b>	Fits all 1.5 cu. yd. tilt trucks		● Black	1	32.00 lbs.	18.300
-----	---------------	----------------------------------	--	---------	---	------------	--------



5849 Shown w/ 5853 Lid

## Tilt-N-Wheel™

### TILT-N-WHEEL™

These 50 gallon containers have a hinged, double walled lid with standard 8" non-marking wheels.



Available in a Recycle model, see page 107 for details.

Brand	Item Number	Capacity	Color	Pack Case	Case Weight	Case Cube
CMC	<b>5850BK</b>	50 gal.	● Black	2	56.00 lbs.	18.540
CMC	<b>5850YW</b>	50 gal.	● Yellow	2	56.00 lbs.	18.540



## Utility Carts

### PNEUMATIC UTILITY CART

The heavy-duty plastic construction is lightweight and durable, and is designed to handle applications from health care to industrial. The 8" fully pneumatic casters and all plastic design provide a cushioned, quiet ride that is ideal for transporting fragile items over rough surfaces. Derma-Tek® smooth skin, non-porous finish is easy to clean and provides a professional appearance that will not peel, chip, crack or fade like conventional metal units. Supports 200 lbs. per shelf, 400 lbs. maximum capacity. Compatible with 5806 Optional Center Shelf, found on page 110.

Brand	Item Number	Size	Color	Pack Case	Case Weight	Case Cube
CMC	<b>5805BE-PN</b>	40 <sup>3</sup> / <sub>8</sub> " x 25 <sup>1</sup> / <sub>2</sub> " x 37"	● Beige	1	72.15 lbs.	5.860
CMC	<b>5805GY-PN</b>	40 <sup>3</sup> / <sub>8</sub> " x 25 <sup>1</sup> / <sub>2</sub> " x 37"	● Grey	1	72.15 lbs.	5.860



## UTILITY CART

The 5800 and 5805 two shelf Utility Carts feature 5" heavy-duty, non-marking grey casters for industrial use. Supports 200 lbs. per shelf, 400 lbs. maximum capacity. Optional center shelf available.



5805 shown w/ 5806, Optional Center Shelf.

Brand	Item Number	Size	Color	Pack Case	Case Weight	Case Cube
CMC	<b>5800BE</b>	34 <sup>3</sup> / <sub>8</sub> " x 17 <sup>1</sup> / <sub>2</sub> " x 33"	● Beige	1	32.90 lbs.	3.440
CMC	<b>5800GY</b>	34 <sup>3</sup> / <sub>8</sub> " x 17 <sup>1</sup> / <sub>2</sub> " x 33"	● Grey	1	32.90 lbs.	3.440
CMC	<b>5805BE</b>	40 <sup>3</sup> / <sub>8</sub> " x 25 <sup>1</sup> / <sub>2</sub> " x 33"	● Beige	1	42.60 lbs.	5.860
CMC	<b>5805GY</b>	40 <sup>3</sup> / <sub>8</sub> " x 25 <sup>1</sup> / <sub>2</sub> " x 33"	● Grey	1	42.60 lbs.	5.860

### OPTIONAL CENTER SHELF

CMC	<b>5801BE</b>	Fits all #5800 Carts	● Beige	1	10.40 lbs.	1.470
CMC	<b>5801GY</b>	Fits all #5800 Carts	● Grey	1	10.40 lbs.	1.470
CMC	<b>5806BE</b>	Fits all #5805 Carts	● Beige	1	16.50 lbs.	2.590
CMC	<b>5806GY</b>	Fits all #5805 Carts	● Grey	1	16.50 lbs.	2.590

## Service/Bussing Carts

### SERVICE / BUSSING CARTS

Three shelf cart features 4" heavy-duty, non-marking grey casters. Applications range from industrial use to food service and bussing. Supports 200 lbs. per shelf, 400 lbs. maximum capacity. Accepts, without tools, the 5811 and 5812 silverware and refuse bins (see page 126 for details).

Brand	Item Number	Size	Color	Pack Case	Case Weight	Case Cube
CMC	<b>5810BE</b>	31 <sup>1</sup> / <sub>4</sub> " x 16 <sup>1</sup> / <sub>4</sub> " x 36 <sup>3</sup> / <sub>8</sub> "	● Beige	1	24.33 lbs.	4.340
CMC	<b>5810BK</b>	31 <sup>1</sup> / <sub>4</sub> " x 16 <sup>1</sup> / <sub>4</sub> " x 36 <sup>3</sup> / <sub>8</sub> "	● Black	1	24.33 lbs.	4.340

This utility cart is ideal for many commercial applications. The four shelf design increases the cart's usable storage space by 33%. Easily accommodates four bus tubs and the Continental® 5811 Silverware and 5812 Refuse Bins. The 4" all-swivel, non-marking casters and dual handle makes this cart easy to maneuver, even when fully loaded. Supports 200 lbs. per shelf, 400 lbs. maximum capacity.

Brand	Item Number	Size	Color	Pack Case	Case Weight	Case Cube
CMC	<b>5807BE</b>	31 <sup>1</sup> / <sub>4</sub> " x 16 <sup>1</sup> / <sub>4</sub> " x 49"	● Beige	1	33.73 lbs.	5.460
CMC	<b>5807BK</b>	31 <sup>1</sup> / <sub>4</sub> " x 16 <sup>1</sup> / <sub>4</sub> " x 49"	● Black	1	33.73 lbs.	5.460

Ideal for A/V use, the 5808 Utility Cart is both sturdy and attractive. The brushed aluminum uprights and Derma-Tek® smooth surface design fits nearly any décor and is easy to clean and keep clean. The 4" all-swivel, non-marking casters provide finger touch mobility, while the locking caster provides the added protection required for expensive A/V equipment.

Brand	Item Number	Size	Color	Pack Case	Case Weight	Case Cube
CMC	<b>5808BK</b>	31 <sup>1</sup> / <sub>4</sub> " x 16 <sup>1</sup> / <sub>4</sub> " x 49"	● Black	1	28.59 lbs.	4.040

Designed for economy and convenience, the 5809 two-shelf Service/Utility Cart is ideal for transporting large, bulky items. Weight rated at 200 lbs. per shelf, 400 lbs. maximum capacity, this unit is definitely up to the task. All-swivel, 4", non-marking casters and dual handle design make moving this cart a breeze. Ergonomic handle design assists steering from either end and the rounded design protects doors, walls and furniture.

Brand	Item Number	Size	Color	Pack Case	Case Weight	Case Cube
CMC	<b>5809BE</b>	31 <sup>1</sup> / <sub>4</sub> " x 16 <sup>1</sup> / <sub>4</sub> " x 36 <sup>3</sup> / <sub>8</sub> "	● Beige	1	21.35 lbs.	2.630
CMC	<b>5809BK</b>	31 <sup>1</sup> / <sub>4</sub> " x 16 <sup>1</sup> / <sub>4</sub> " x 36 <sup>3</sup> / <sub>8</sub> "	● Black	1	21.35 lbs.	2.630

## Hand Trucks

### DELUXE STEEL HAND TRUCK

Handles cartons or drums up to 55 gallons. Blue enamel finish is rust and corrosion resistant. Large, 10" x 2 3/4", solid wheels for durability.

Brand	Item Number	Color	Pack Case	Case Weight	Case Cube
CMC	43	● Blue Enamel Finish	1	36.13 lbs.	7.370



## Step Stool

### PLASTIC STEP STOOL

This structural plastic step stool is rugged enough to hold up to 350 lbs. The molded-in no-slip surface prevents falls. Four retractable, non-marking casters and an anti-skid bottom makes it easy to maneuver and hold it in place during use.

Brand	Item Number	Color	Pack Case	Case Weight	Case Cube
CMC	523BK	● Black	1	8.30 lbs.	1.310
CMC	523TN	● Tan	1	8.30 lbs.	1.310



## Dunnage Racks

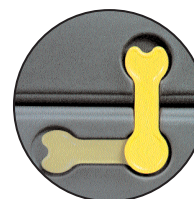
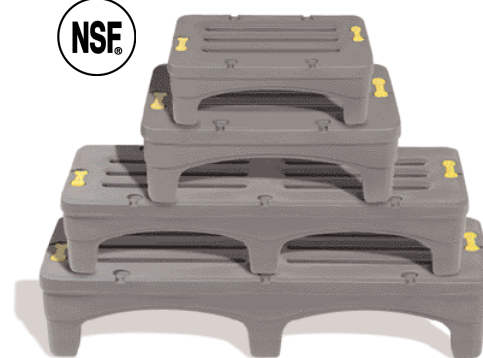
### DUNNAGE RACK

These racks are the best solution for your storage needs. Made of durable polyethylene construction, these units won't rust, dent, chip or corrode like metal units. The light textured surface is easy to wipe-off or steam clean. The Dunnage-Key connector storage slot allows for storage when not in use and is sloped to allow for drainage when cleaning. Ventilation slots allow air to circulate under stored goods, promoting longer shelf life. Racks can be joined together in end-to-end, back-to-back or in a L or U shape, to accommodate all storage needs. 12" height meets NSF®, FDA and USDA requirements and meets food codes and H.A.C.C.P.'s food storage requirements. Two keys are furnished with each rack. Additional keys available.

Brand	Item Number	Size	Load Capacity	Color	Pack Case	Case Weight	Case Cube
CMC	5930	30" x 22" x 12"	1,500 lbs.	● Grey	1	16.00 lbs.	4.950
CMC	5936	36" x 22" x 12"	1,500 lbs.	● Grey	1	19.50 lbs.	5.920
CMC	5948	48" x 22" x 12"	3,000 lbs.	● Grey	1	29.50 lbs.	7.810
CMC	5960	60" x 22" x 12"	3,000 lbs.	● Grey	1	32.50 lbs.	9.740

### DUNNAGE RACK KEY

CMC	5906	N/A	N/A	● Yellow	6	0.28 lbs.	0.010
-----	------	-----	-----	----------	---	-----------	-------



## Shelves



### STRUCTO TUFF™ SHELVES

Structo Tuff™ Shelves are ideal for commercial use with chemical dispensing jugs, office supplies and other items in warehouses, offices and janitor closets. Fast, easy assembly without tools. Holds up to 250 lbs. per shelf.

Brand	Item Number	Size	Color	Pack Case	Case Weight	Case Cube
CMC	<b>4418-5GY</b>	40" x 18" x 72"	● Charcoal Grey	1	71.00 lbs.	7.580



### VENTILATED STORAGE SHELF

Ventilated Storage Shelf design allows for a moisture and dust free storage environment for all your supplies. "Quick Assembly" socket and column system - no tools needed. Holds up to 150 lbs. per shelf.

Brand	Item Number	Size	Color	Pack Case	Case Weight	Case Cube
CMC	<b>6484OY</b>	36 <sup>1</sup> / <sub>4</sub> " x 18 <sup>1</sup> / <sub>8</sub> " x 54 <sup>1</sup> / <sub>4</sub> "	○ Oyster	1	24.66 lbs.	4.220



### NSF® VENTILATED STORAGE SHELF

Ventilated Storage Shelf design allows for a moisture and dust free storage environment for all your supplies with base leveling feet. NSF® listed. Holds up to 150 lbs. per shelf. Includes practical 6" leveling feet for cleaning and stability.

Brand	Item Number	Size	Color	Pack Case	Case Weight	Case Cube
CMC	<b>6485OY</b>	36 <sup>1</sup> / <sub>4</sub> " x 18 <sup>1</sup> / <sub>8</sub> " x 60 <sup>1</sup> / <sub>4</sub> "	○ Oyster	1	27.06 lbs.	4.220

NSF.